



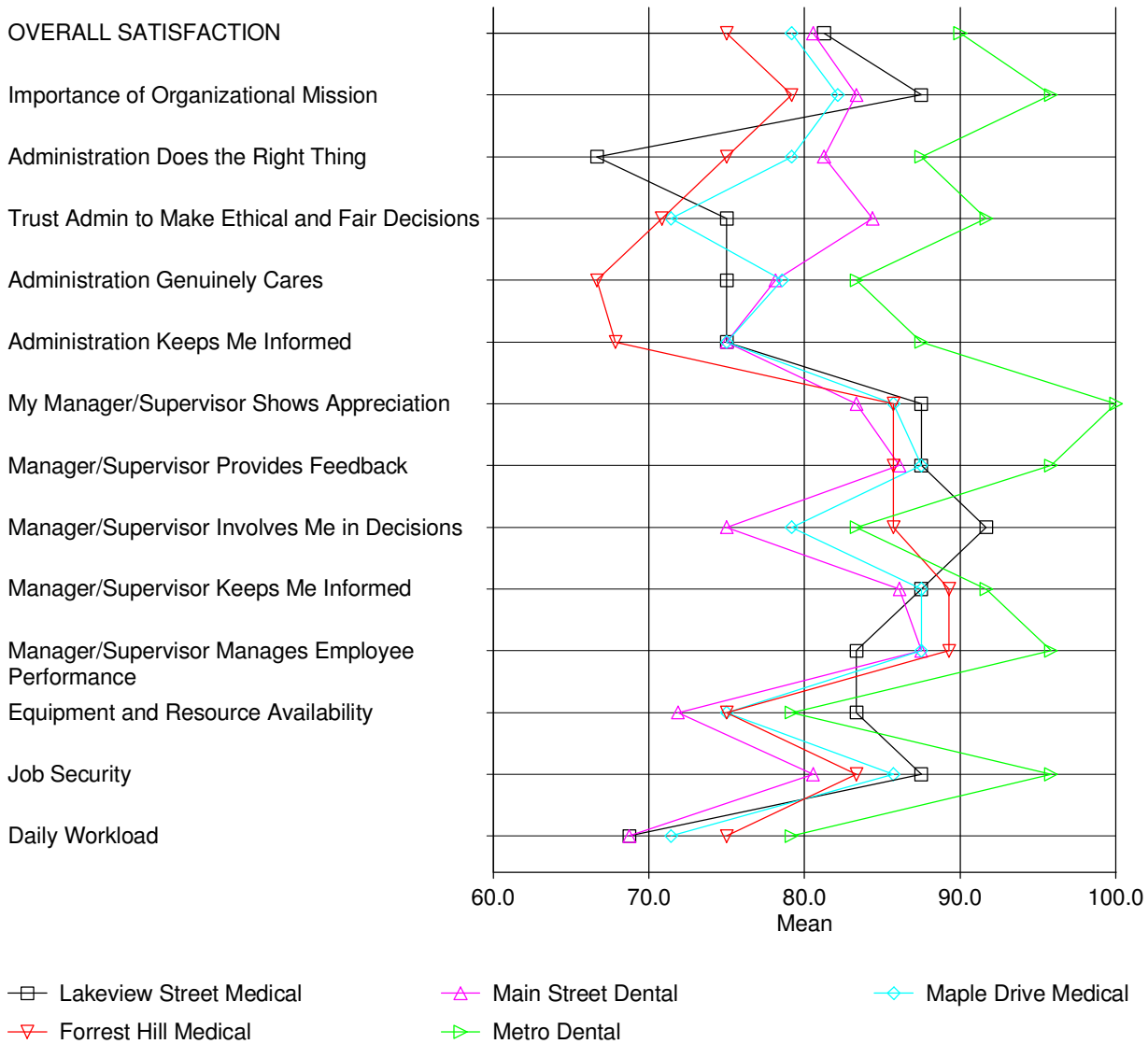
Best Community Health Center

BCHC Employee Perception Report 2009

Cross-tabulation Report

Note: Some categories have been combined to ensure compliance with confidentiality parameters.

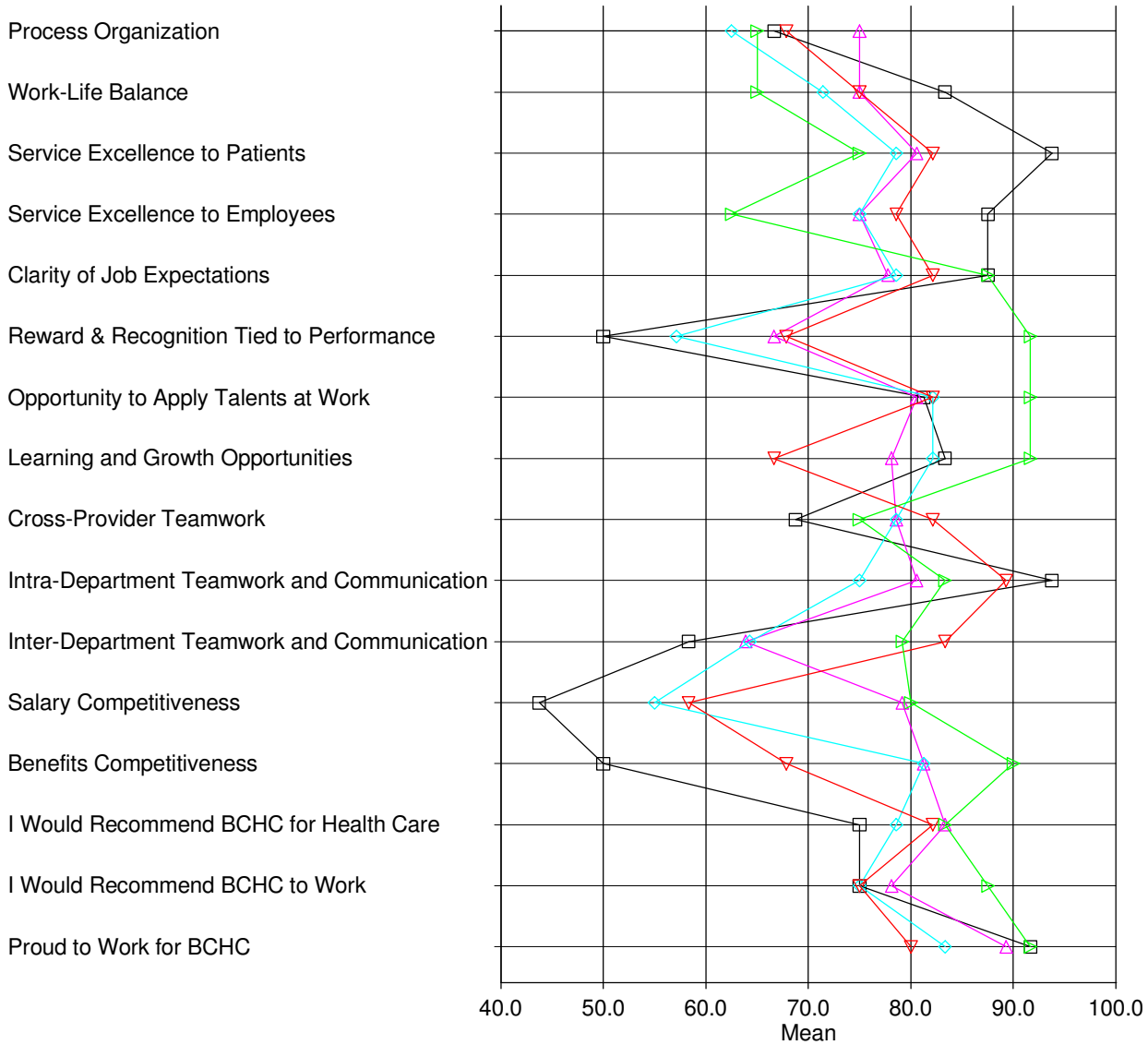
Average Scores By-Location



Counts By-Location

Location	Lakeview Street Medical	Main Street Dental	Maple Drive Medical	Forrest Hill Medical	Metro Dental	Totals
	4	9	7	7	6	33

Average Scores By-Location

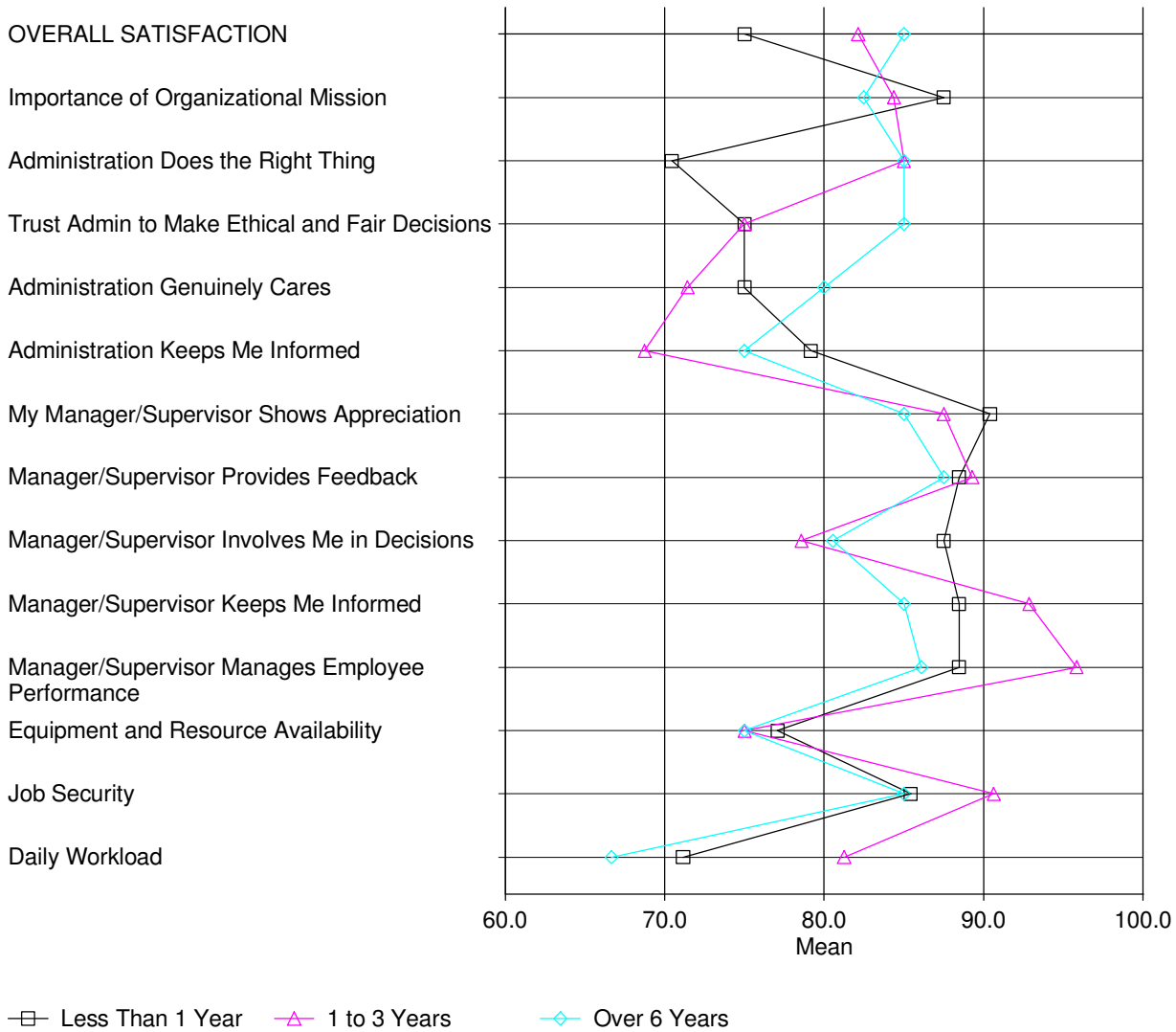


- Lakeview Street Medical
 Main Street Dental
 Maple Drive Medical
- Forrest Hill Medical
 Metro Dental

Counts By-Location

Location					
Lakeview Street Medical	Main Street Dental	Maple Drive Medical	Forrest Hill Medical	Metro Dental	Totals
4	9	7	7	6	33

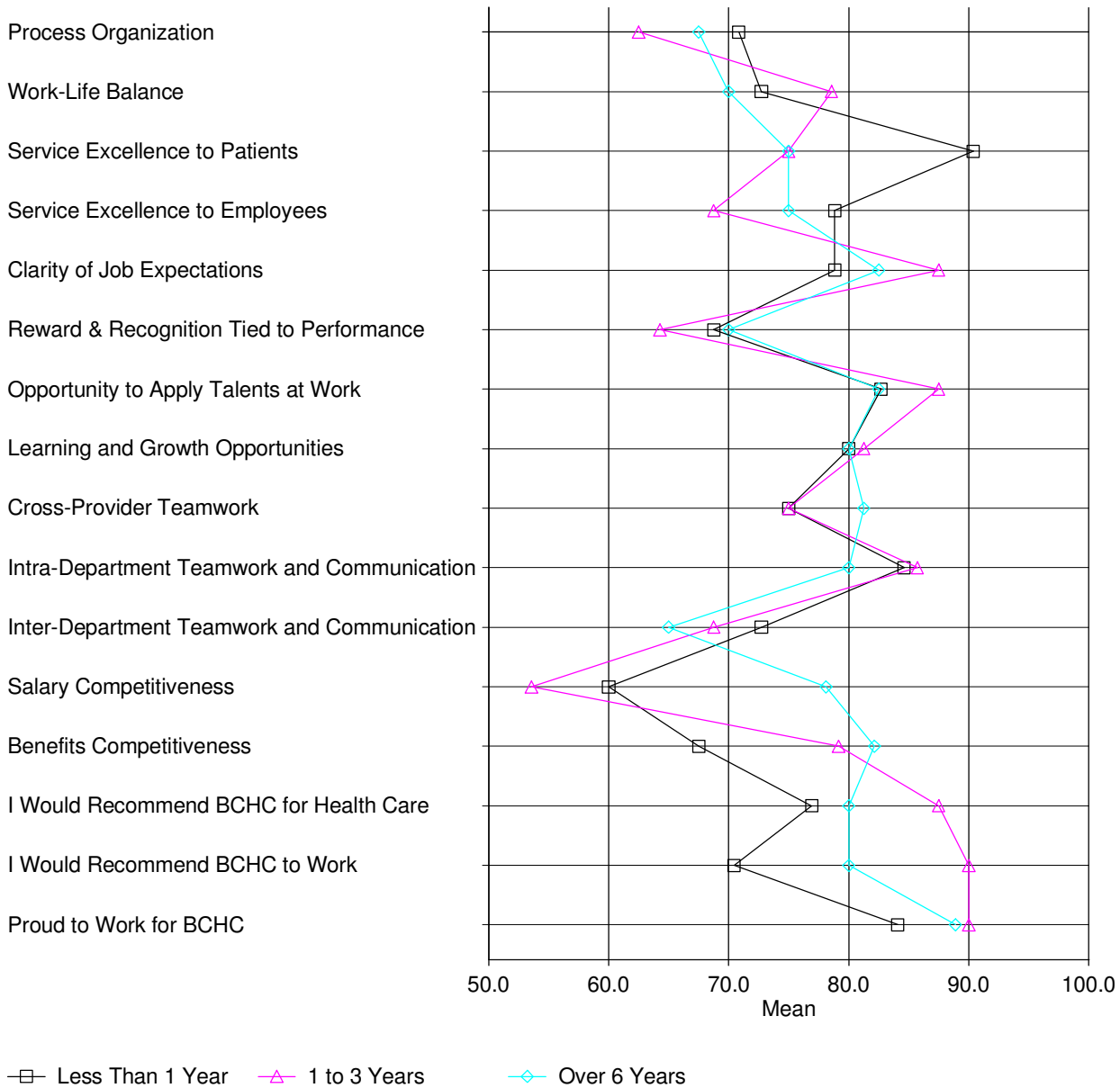
Average Scores By-Tenure



Counts By-Tenure

How long have you been employed at BCHC?							
Less Than 6 Months	6 Months to 1 Year	1 to 2 Years	2 to 3 Years	6 to 10 Years	Over 10 Years	Other	Totals
2	11	6	2	2	7	1	31

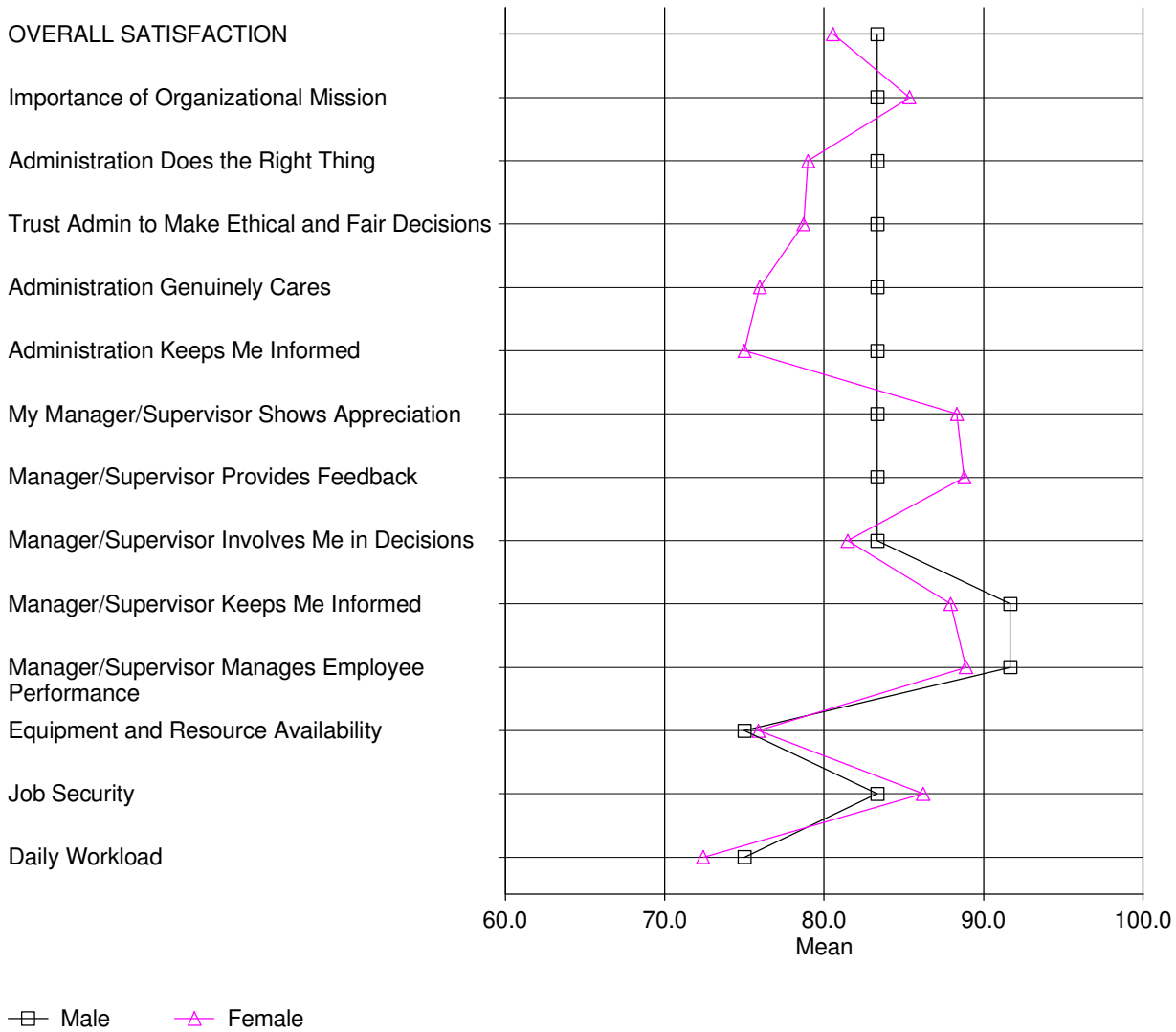
Average Scores By-Tenure



Counts By-Tenure

How long have you been employed at BCHC?							Totals
Less Than 6 Months	6 Months to 1 Year	1 to 2 Years	2 to 3 Years	6 to 10 Years	Over 10 Years	Other	
2	11	6	2	2	7	1	31

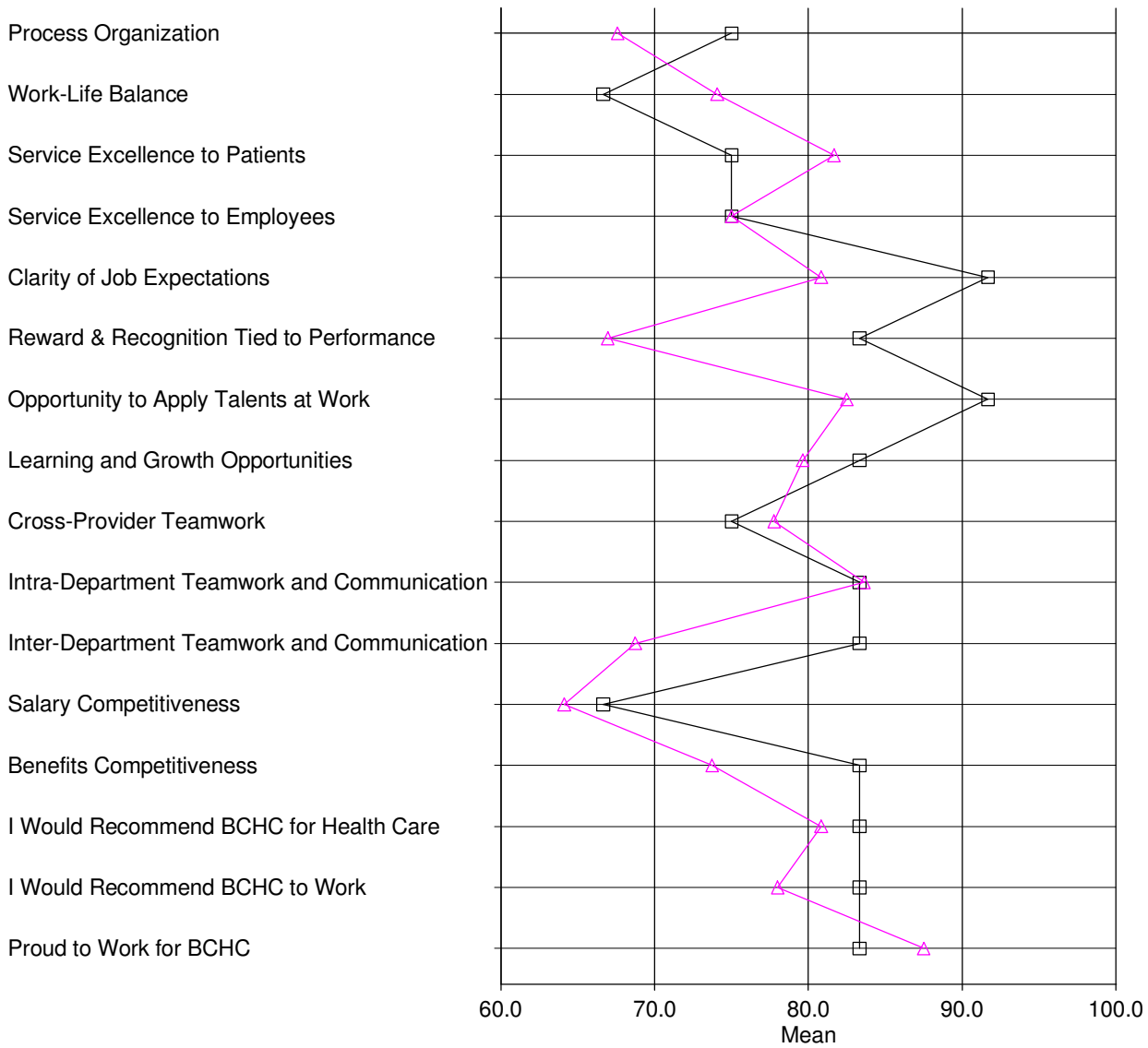
Average Scores By-Gender



Counts By-Gender

Gender:		
Male	Female	Totals
3	30	33

Average Scores By-Gender (Cont...)

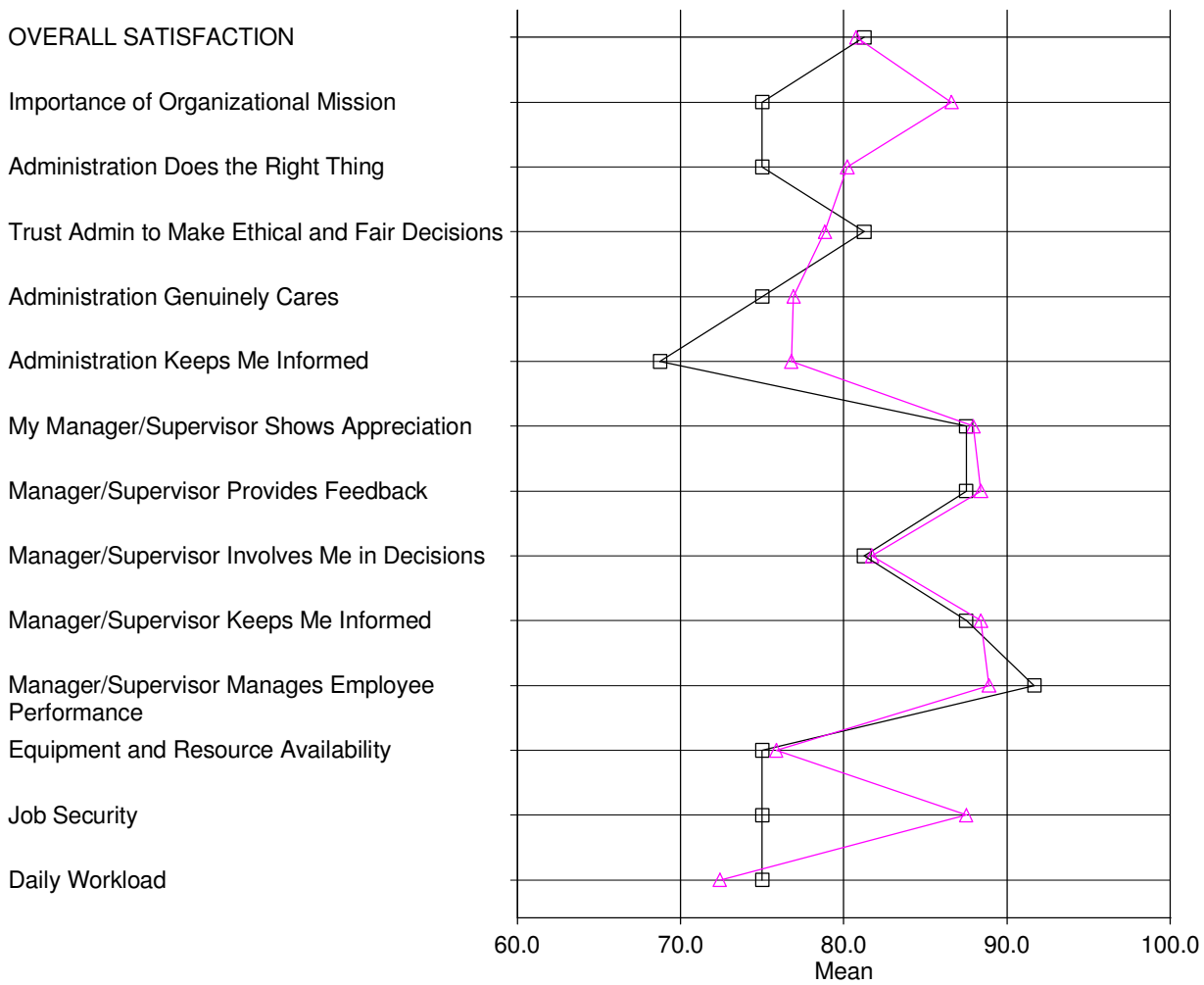


—□— Male —△— Female

Counts By-Gender

Gender:		
Male	Female	Totals
3	30	33

Full Time vs. Part Time Score Comparison

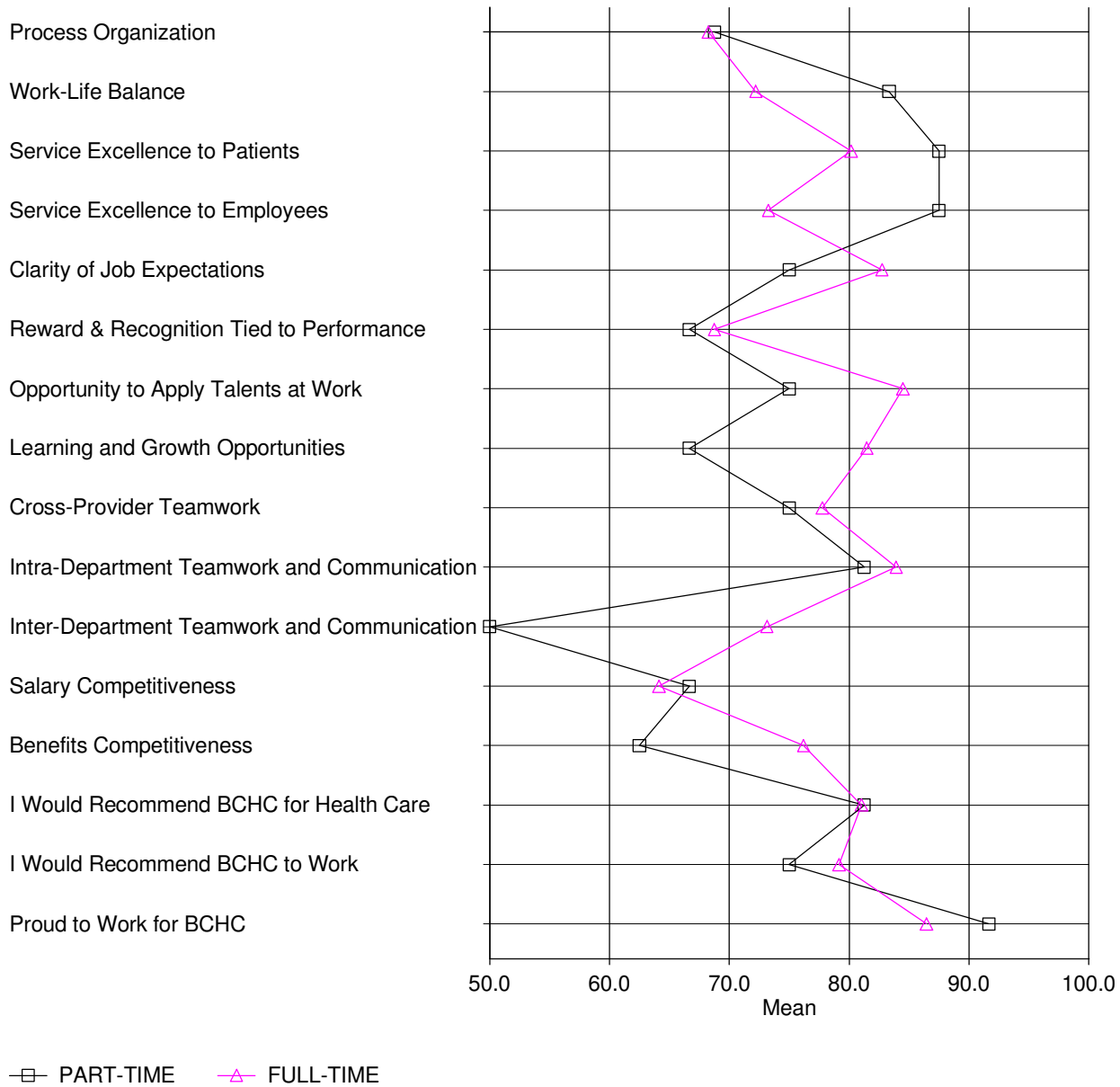


□ PART-TIME ▲ FULL-TIME

Counts By-Status

Status:		
Full Time (FT)	Part Time (PT)	Totals
29	4	33

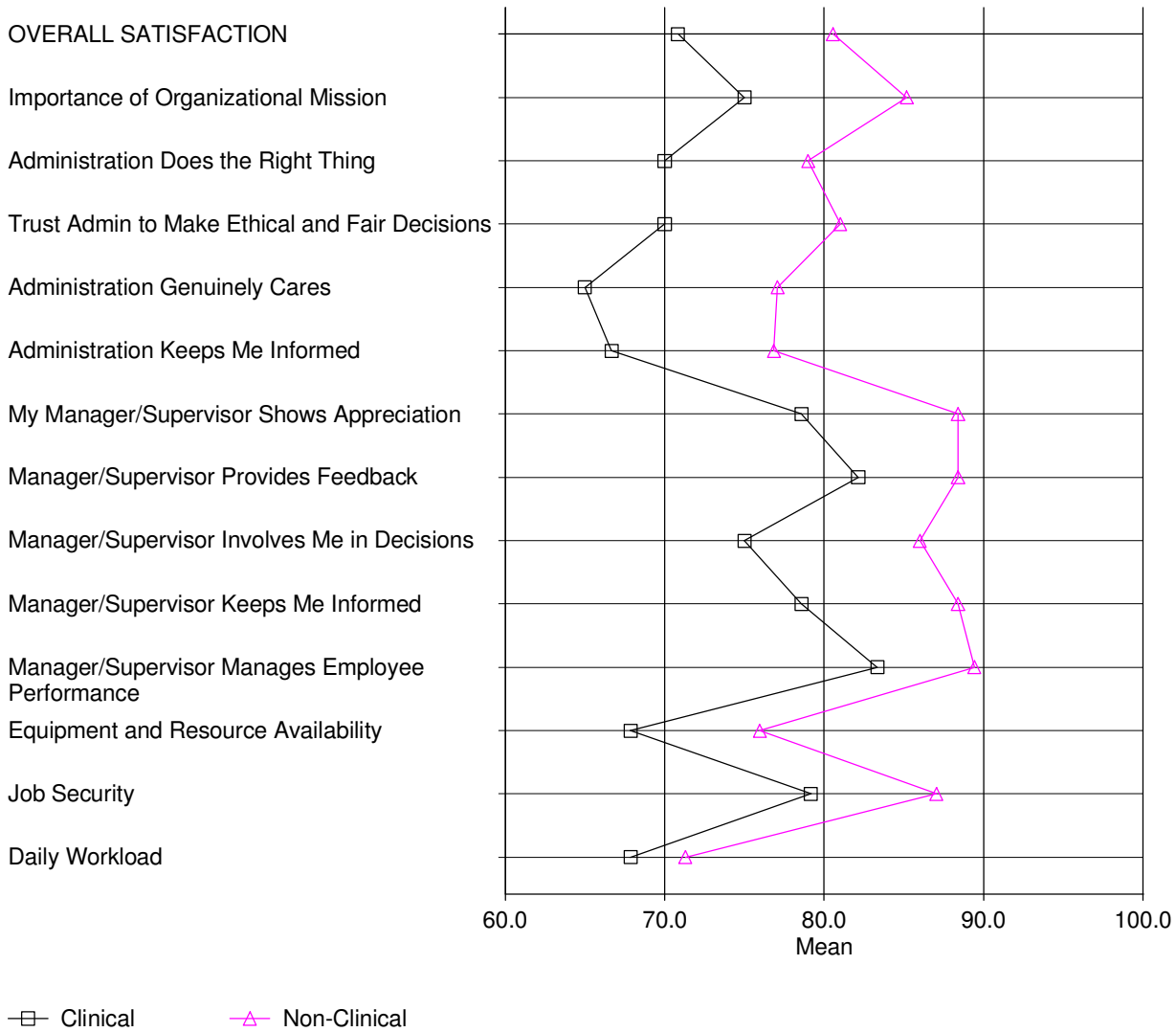
Full Time vs. Part Time Score Comparison (Cont...)



Counts By-Status

Status:		
Full Time (FT)	Part Time (PT)	Totals
29	4	33

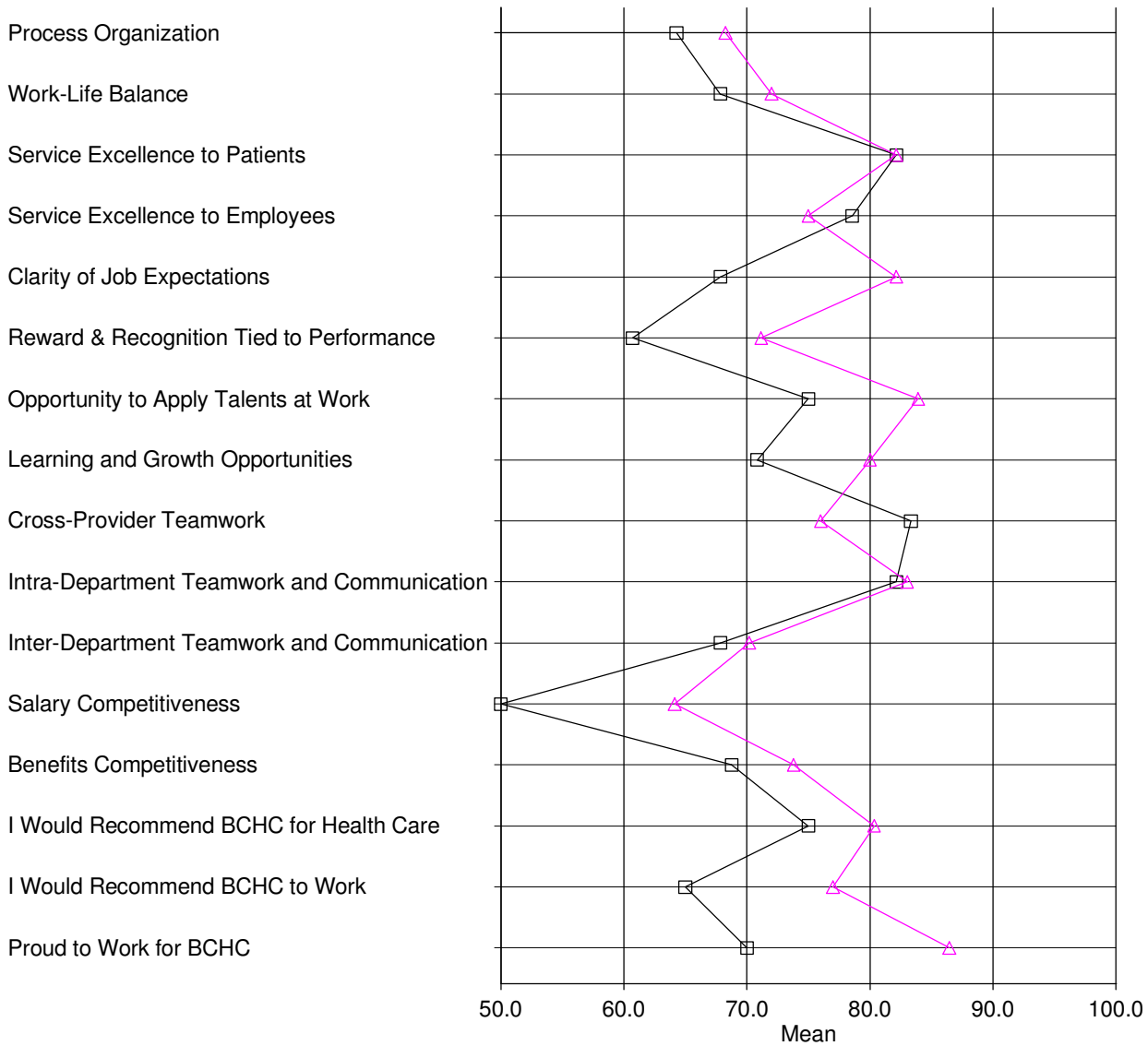
Clinical vs. Non-Clinical Employee Scores



Counts By-Position

	Position:		Totals
	Non-Clinical	Clinical	
	3	7	10

Clinical vs. Non-Clinical Employee Scores



—□— Clinical —△— Non-Clinical

Counts By-Position

Position:		
Non-Clinical	Clinical	Totals
3	7	10